

C
L
u
E
S

Clues

Clues left behind at a crime scene can help investigators catch a criminal.

1. Explore the text.

● Look at the headings and illustrations to predict what the text is about.

● Read the text to check your prediction.

2. Respond to the text.

A. Try to match your fingerprints to one of these patterns.

B. Look carefully at the footprint in the snow. Match the footprint to the right shoe.

- What kinds of clues can you find at the scene of a crime?
- What information can the detective learn from these clues?

Fingerprints

Every fingerprint is unique. It can confirm a person's identity. Look closely at the patterns of your fingerprints. What do they look like? Which type are they?



Arch



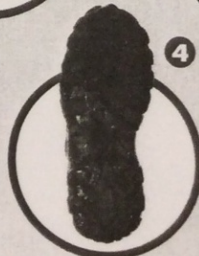
Loop



Whorl

Footprints

A shoe print found near the scene of a crime can show a manufacturing logo or a pattern called a tread. With a footprint, the investigators can tell what type of shoe a suspect was wearing and even guess the person's weight and height. It is possible to preserve footprints by making plaster casts.



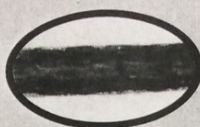
Glossary

• cast = reproduction

C. Take a piece of sticky tape and pass it over your clothes. Did you find a strand of hair? Is it yours?

Hair

Humans lose about 100 strands of hair a day. There is a good chance a criminal will leave a hair behind. This can be important evidence for investigators. One strand of hair can determine a person's race and maybe even approximate age, as well as his or her hair colour and whether it is tinted or not.



Is it human or animal?

That is the first thing investigators determine.

D. Match the fibres to their sources.

Animal, Vegetable or Synthetic?

Cloth fibres are often found as evidence at crime scenes. Investigators can link a suspect to a crime by matching fibres found at the scene to fibres found in a suspect's car or home.

There are different sources of fibres: animal, vegetable and synthetic.



1 a ball of wool



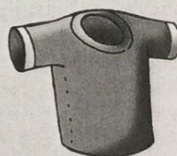
2 a polyester blouse



3 a pair of nylons



4 a silk scarf



5 a cotton T-shirt

Glossary

one strand = one hair

tinted = coloured

home = residence

sloppy = untidy, not careful

lipstick



Sometimes a criminal can be very sloppy and leave an important clue behind, such as a note, an item of clothing or lipstick on a glass. Some criminals have even left behind pictures of themselves.